

Belmar Location



Sign 2



Sign 3



Sign 4



Sign 6



Sign 5



Sign 8

WORKORDER

LEAD # 00099762

JOB # SURV10106

COMPLETED 1/13/12 QF

CUSTOMER	Id	HAMILTO	Name	HAMILTON FEDERAL BA
	Add1	5600 HARFORD ROAD		
	Add2			
	BALTIMORE	MD	21214	
	Phone ()	4102549700		
	Attention	JIM HERSHNER		
LOCATION	Name	HAMILTON BANK		
	Add1	BELMAR OFFICE		
	Add2	6301 BELAIR RD.		
	BALTIMORE	MD	21206	
	Phone	4104263050		
INSTALLATION	ID	TRIA01		
	Name	TRIANGLE SIGN & SERVICE		
	Add1			
	BALTIMORE	MD	21227	
	Contact	John Siebbing		
	Phone	4102475300		

PO NUMBER	Due Date	12/28/2011	SalesRep	RN	Store No	Proj. Mgr	jstebbing	JPAGE
Segment No	Quantity	Sequence	Segment No Bar Code					
1	1	1						

Description

HAMILTON FEDERAL BANK IS CHANGING OVER TO HAMILTON BANK.

SURVEY ALL SIGNS FOR REFACE AND RELAMP

INTERIOR LETTERS AT TELLER LINE
NEED SIZE OF AREA AND INFO FOR PATCH & PAINT

DOOR VINYL.

ATM SURROUNDS

ANY OTHER VINYL/SIGNS WITH HAMILTON FEDERAL AT DEPOSIT BOXES, DRIVE UPS, ATMS AND DOORS

CHANGE OVER WILL OCCUR MID TO LATE JANUARY.

LABOR STAGES:

500000 INSTALLATION 0 hrs; sequence: 9



SURV10106

JOB NO

STATUS DONE

STATUS INPROCESS



DONE



INPROCESS

Permit

MPPermit

PERMIT	Name	
	Add1	
	Add2	
	Contact	
	Phone/Fax	
	Email	

Wednesday, December 21, 2011

Page 1 of 2

WORKORDER

LEAD #

00099762

JOB #

SURV10106

C U S T O M E R	Id HAMILTO	Name HAMILTON FEDERAL BA
	Add1 5600 HARFORD ROAD	
	Add2	
	BALTIMORE MD 21214	
	Phone () 4102549700	
Attention JIM HERSHNER		
L O C A T I O N	Name HAMILTON BANK	
	Add1 BELMAR OFFICE	
	Add2 6301 BELAIR RD.	
	BALTIMORE MD 21206	
	Phone 4104263050	
I N S T A L L	ID TRIA01	
	Name TRIANGLE SIGN & SERVICE	
	Add1	
	BALTIMORE MD 21227	
	Contact John Stebbing	
Phone 4102475300		

PO NUMBER

Due Date

12/28/2011 SalesRep RN

Store No

Proj. Mgr jstebbing

Mechanic's Comments

Surveyed signs for Kieth Main, went over Survey prior to going to site with Kieth for what was needed.

Description Of Neon

Color

E - E

Broken Repump

Price

Materials Used

Price

Date

Job Labor Hrs/Mechanic

Time

1-13-12

Greg - 1 man

6 1/2

NOTES



SURV10106

JOB NO

STATUS DONE

STATUS INPROCESS



DONE



INPROCESS

Permit

MPPermit

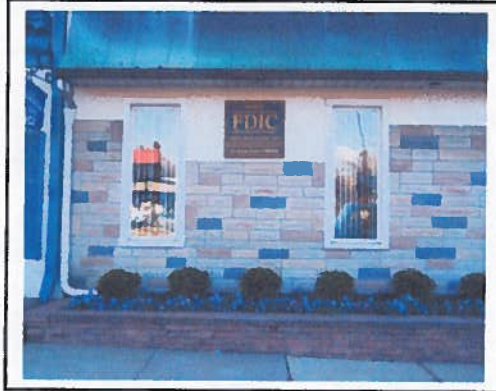
P E R M I T	Name
	Add1
	Add2
	Contact
	Phone/Fax
	Email

Wednesday, December 21, 2011

Page 2 of 2

HAMILTON BANK - BELMAR OFFICE - 6301 Belair Rd - Baltimore, MD

FRONT ELEVATION



SIGN 1 NON-ILLUMINATED FCO ALUMINUM PLATE LETTERS LOCATED ABOVE THE MAIN ENTRANCE

Material	- Aluminum Plate
Finish	- Painted Blue
Thickness	- 1/4"
Spacers	- N/A - Flush Mount
H Height	- 16-1/8"H
A Height	- 10-1/2"H
FED BANK Hgt	- 8" & 3-1/2"H
Hamilton OAW	- 88-5/8"
Fed Bank Hgt	- 41-1/2"
Substrate	- Stucco
Substrate Dim	- 40-1/2"H x 98-1/8"W



SIGN 2 ATM SURROUND FACE LOCATED IN THE ATM AT THE FRONT OF THE BUILDING

Cut Size	- 9-13/16"H x 51-1/2"W x 1/8"T
V.O.	- 8-3/8"H x 49"W
Retainer	- N/A - Face retained w/Velcro
Lamps	- 2 - Bi-Pin T8
Ballast	- 1
Hamilton Hgt	- 5-1/2" & 3-5/8"
Fed Bank Hgt	- 1-3/4" & 1-1/8"
Hamilton OAW	- 31-1/2" OAW
Fed Bank OAW	- 15-1/2"



SIGN 3 WINDOW VINYL LOCATED ON FRONT ELEVATION TO LEFT OF MAIN ENTRANCE DOOR

Window V.O.	- 70-3/4"H x 82-3/4"W
Material	- 1st Surface White Vinyl
Copy Height	- 7" UC/5" LC
Copy OAW	- 70-1/4"
Rubbing	- On File



HAMILTON BANK - BELMAR OFFICE - 6301 Belair Rd - Baltimore, MD

Front Elevation - Continued

SIGN 4 DOOR VINYL & EAGLE LOGO LOCATED ON MAIN ENTRANCE DOOR

Door V.O.	- 30-1/2"
Material	- 2nd Surface Gold Vinyl
Copy Height	- 2-1/2"
Rubbing	- On File



HAMILTON BANK - BELMAR OFFICE - 6301 Belair Rd - Baltimore, MD

SIDE ELEVATION



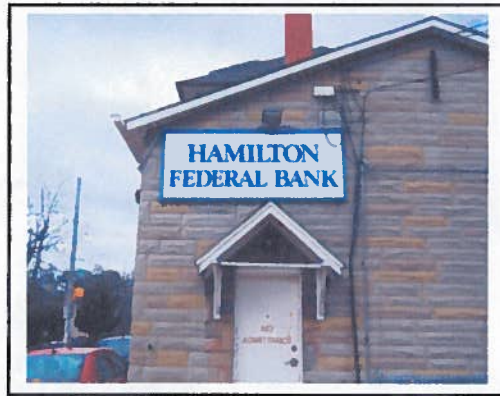
SIGN 5 WINDOW VINYL LOCATED ON THE SIDE ELEVATION ON THE LEFT CORNER

- | | |
|-------------|---------------------------|
| Window V.O. | - 70-3/4" H x 82-3/4" W |
| Material | - 1st Surface White Vinyl |
| Copy Height | - 7" UC/5" LC |
| Copy OAW | - 70-1/4" |
| Rubbing | - On File |



HAMILTON BANK - BELMAR OFFICE - 6301 Belair Rd - Baltimore, MD

REAR ELEVATION



SIGN 6 NON-ILLUMINATED METAL PANEL WITH TRIM LOCATED ON THE REAR ELEVATION

Sign Type	- Flat Aluminum Face w/ Blue Trim
Copy Type	- Blue 1st Surface Vinyl
OA Dimension	- 36-1/4"H x 96-1/2"W x 1-1/4"Deep
V.O.	- 33-1/8"H x 93-3/8"W
Retainer	- 1-1/2"
Trim Color	- Blue
Lamps	- None
Ballast	- None
Notes	- Flat Aluminum Panel - Pop Riveted to Channel Frame With Angle Trim



SIGN 7 NON-ILLUMINATED METAL PANEL WITH VINYL COPY LOCATED ON THE REAR ELEVATION

Sign Type	- Flat Aluminum
Copy Type	- Blue/Red 1st Surface Vinyl
OA Dimension	- 24"H x 36"W
Hamilton	- 3"H
Customer	- 5"H
Border	- 1/2" Wide - Sets in 5/8" From Edge
Lamps	- None
Ballast	- None
Attachment	- Plastic Tapin Anchors



HAMILTON BANK - BELMAR OFFICE - 6301 Belair Rd - Baltimore, MD

MISCALENEOUS SIGNS



SIGN 8 ILLUMINATED DOUBLE FACED PYLON SIGN LOCATED AT THE RIGHT CORNER OF THE BUILDING

Cut Size	- 72-7/8"H x 72-5/8"W
V.O.	- 69-1/2"H x 68"W
Retainer	- 2"
Trim Color	- Duronodic
Lamps	- 6 - F76T12HO
Ballast	- 2 - ASB-1224-24-BL-TP
Hanger	- None
Copy	- 3/16" Thick Blue Plastic Letters Glued On
Letter Heights	- "K"=7-1/2" ~ "T"=8-3/58" ~
Logo	- 30"H x 18-5/8"W
Widths	- "Hamilton" - 65-1/2"W & "Bank" - 31-3/8"W
AFF	- 12'



SIGN 9 NON-ILLUM FCO BRASS PINMOUNTED LETTERS LOCATED BEHIND TELLER LINE

Material	- FCO Polished Brass Plate
Letter Heights	- H=7-7/16"} A=4-3/4"} F=2-1/16"} a=1-3/8"
OAW	- 3' 3-1/8"
Substrate	- Vinyl Wall Paper Over Drywall
Mounting	- Pinmount

