





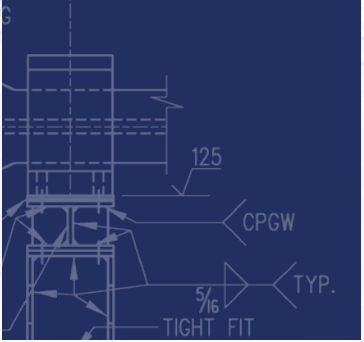
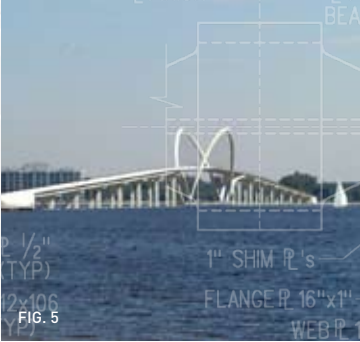
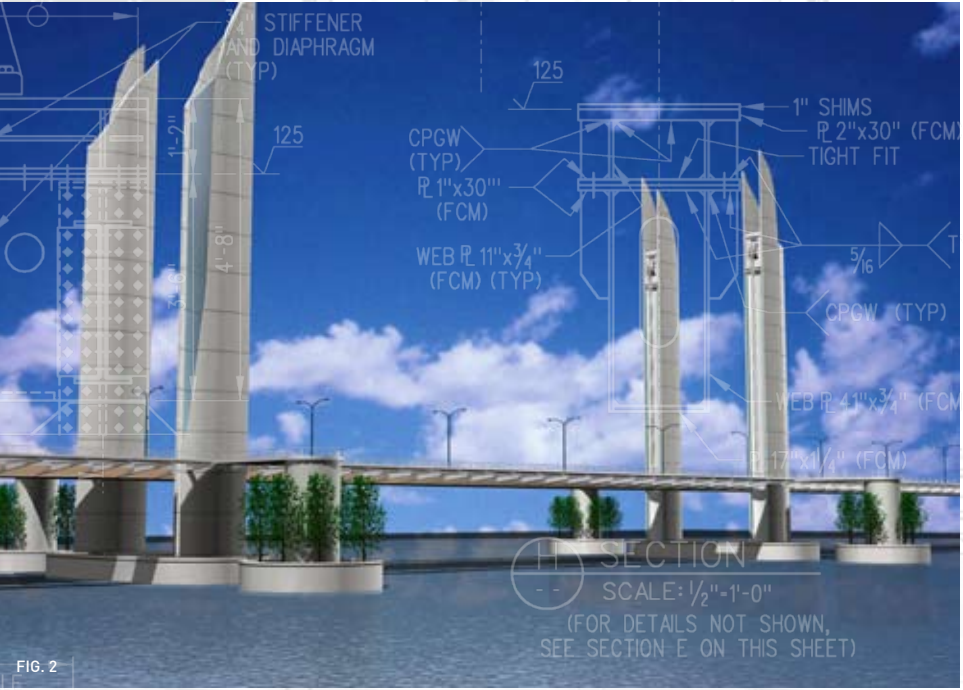
## OUR FUTURE

We will in the future, as we have in the past, always seek to expand the services we provide to you, our clients. Having served the bulk of our present client base for well in excess of fifty years, we will look to continue anticipating their needs for the next fifty years. Your repeated trust, sincerely appreciated and doggedly earned, is our most prolific motivator.

Our future, like that of our clients requires innovating community specific solutions. We believe in partnership; our team is an extension of yours. The growth of our branch offices, eleven in counting, will fuel our ability to more deeply serve our clients. Concurrently, we will expand our global reach sharing our expertise across the country and around the globe—because we believe the best way to serve our clients is to sit next to them, understand their unique challenges and forge solutions together.

We celebrate the accomplishment of growing our mechanical and electrical disciplines to among the largest specialty practices in the world. We look forward to repeating that achievement with our highway, bridge inspection, stadia and power systems disciplines in the years and decades to come.

We also believe that people are the single most valuable asset to any organization. We will not stray from that which has shown us 120 years of success: to recruit and retain the best possible talent in the engineering community; to provide unmatched mentoring and training opportunities; and to grow each individual member of our outstanding team. Expanding on these values which have shown us tremendous success in the past will help us realize our clients' visions in the future.



The future of Hardesty & Hanover shines brightly. Leading the use of advanced technology, materials and construction methods, we strive endlessly to remain visionaries in the engineering community.

You, as a member of the engineering community, shape our future. Through advocacy, mentorship, and research, Hardesty & Hanover will act as steward to what we believe is the most rewarding vocation—the Engineering Profession.

HARDESTY & HANOVER, LLP

CELEBRATING EXCELLENCE AND INNOVATION

FIG. 1- Tianjin, PR China

FIG. 2- Bordeaux, France

FIG. 3- South Adelaide, Australia

FIG. 4- New York, NY

FIG. 5- Lee County, FL

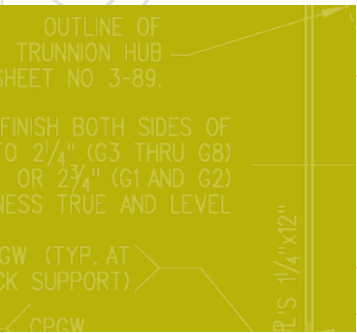
"Building upon the experience and success of those who came before us, we must continue to exceed our clients' expectations now and in the future. It is by leveraging the skills of our vastly talented, deeply committed staff that we will attain the best means to achieve such an important end."

  
Paul Skelton  
Partner & Chief Development Officer





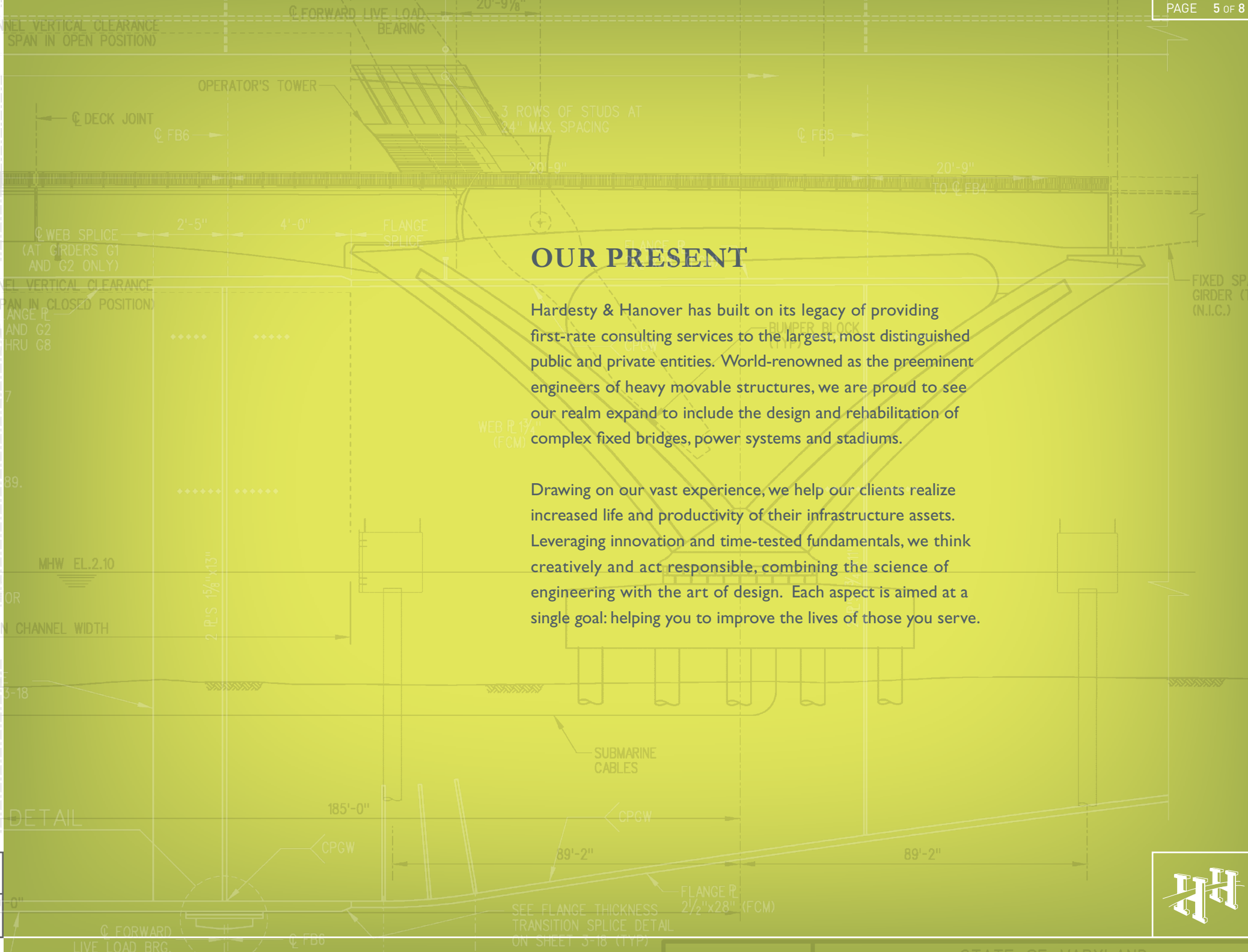
For centuries, engineering concepts have been refined and proven. Hardesty & Hanover prides itself on taking these tried and true concepts and using them in innovative ways.



From designing the heaviest movable bridge in the world to using the most modern materials, Hardesty and Hanover redefines the limits of engineering design.



From designing the heaviest movable bridge in the world to using the most modern materials, Hardesty and Hanover redefines the limits of engineering design.



## OUR PRESENT

Hardesty & Hanover has built on its legacy of providing first-rate consulting services to the largest, most distinguished public and private entities. World-renowned as the preeminent engineers of heavy movable structures, we are proud to see our realm expand to include the design and rehabilitation of complex fixed bridges, power systems and stadiums.

Drawing on our vast experience, we help our clients realize increased life and productivity of their infrastructure assets. Leveraging innovation and time-tested fundamentals, we think creatively and act responsible, combining the science of engineering with the art of design. Each aspect is aimed at a single goal: helping you to improve the lives of those you serve.

**HARDESTY & HANOVER, LLP**

CELEBRATING EXCELLENCE AND INNOVATION

FIG. 1– Westchester County, NY

FIG. 2– New York, NY

FIG. 3– Milwaukee, WI

FIG. 4– New Haven, CT

FIG. 5– Washington, DC

"The cornerstone of any truly successful engagement is the attention paid to detail. By applying this compelling precept universally—not only to the services we directly provide our clients, but also to our internal operations—we can be assured of providing a complete and positive service experience. Our ultimate objective has always been, and remains today, total client satisfaction."

*Charles J. Gozdziwski*

Charles J. Gozdziwski  
Partner & Chief Executive Officer

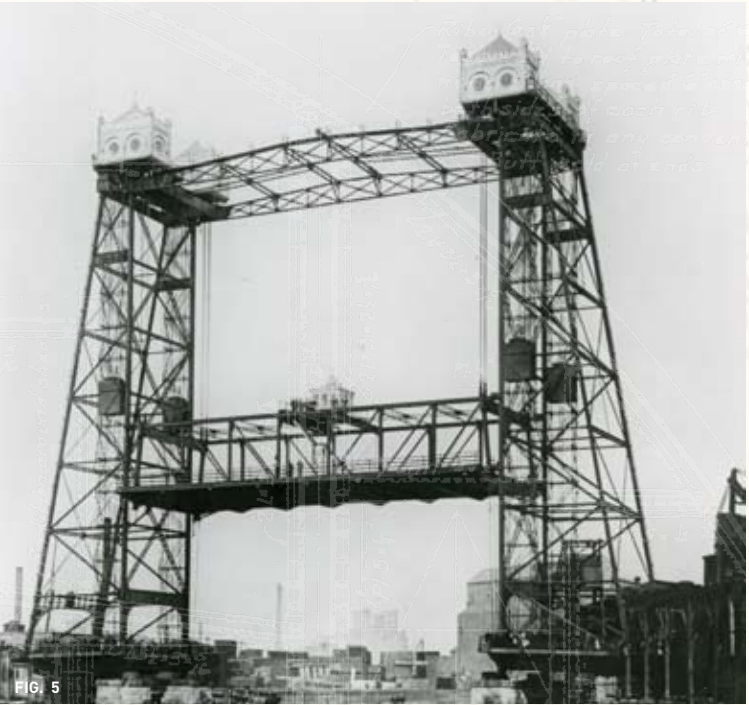
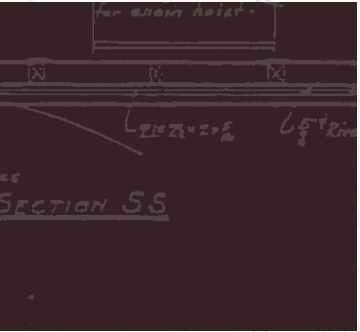




# OUR PAST

Originally established in 1887 by Dr. J.A.L. Waddell, Hardesty & Hanover continues to be a firm owned and operated by professional engineers. As the patent holder on the first vertical lift bridge design, our founding father laid the groundwork for the firm to grow and mature into the distinguished international enterprise we are today.

On each new engagement we bring expertise amassed over twelve decades of service to our communities. From our first project in 1890 to our design of the 1938 and 1964 World’s Fair monuments to our current projects spanning six continents, Hardesty & Hanover continues to build on the legacy established so long ago while contributing as the “noted voice” to what we view as the most satisfying profession of all.



Hardesty & Hanover has been a pioneer in engineering design for the last 120 years. Dr. J.A.L. Waddell’s vertical-lift bridge design patent established a new category of transportation structures. Additionally, Clinton D. Hanover, Jr. defined a new class of structure with the Hanover Skew Bascule. These and other ground-breaking ideas have enabled H&H to bring engineering to the level it is today.

HARDESTY & HANOVER, LLP

CELEBRATING EXCELLENCE AND INNOVATION

FIG. 1- Miami, FL

FIG. 2- Pasadena, CA

FIG. 3- Niagara Falls, NY

FIG. 4- New York, NY

FIG. 5- Chicago, IL

“Experience is the foundation from which success can rise, and we have always measured success by the satisfaction of our clients. The stalwart underpinnings we enjoy today—earned over the last century—will benefit our clients in the next.”

*A.W. Herrmann*

Andrew W. Herrmann  
Managing partner



“The Science of Bridge Designing Lies Mainly in the Detailing.”

*J. A. L. Waddell.*  
**Dr. J.A.L. Waddell**  
Founder

Our founder, Dr. J.A.L. Waddell knew the importance of attention to detail in bridge engineering. We continue to carry on this tradition, but its use has grown in application to the many unique structures we now engineer. The growth of our specialties is due, in part, to the continuation of the traditions that have contributed to success since our inception.

As we celebrate our 120th Anniversary, we continue to build on this legacy by focusing on the future—yours as well as ours.

