

FIG. 1 - FROM SHEET 55 OF 44. MACHINERY HOUSE

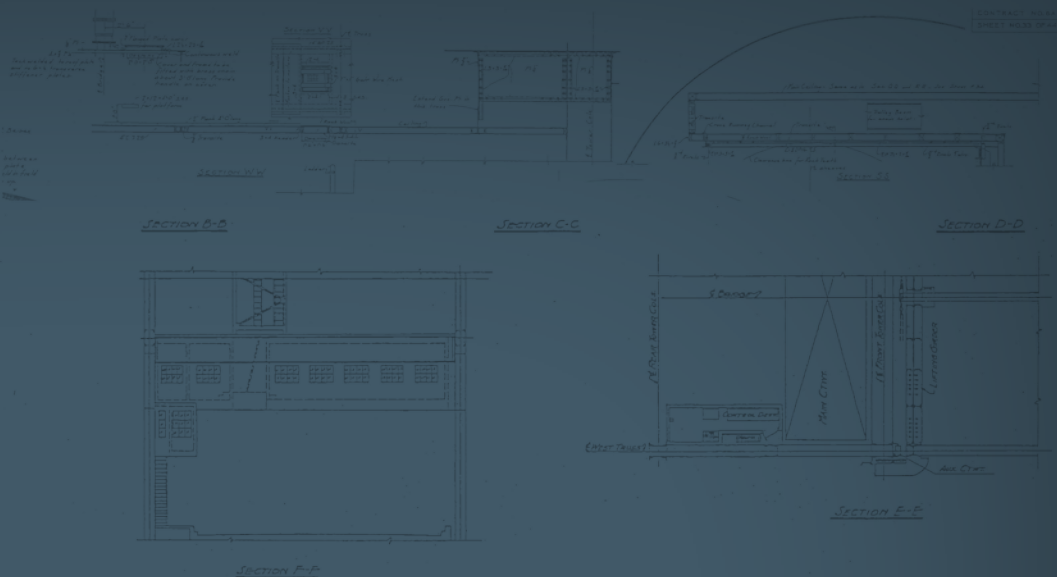


FIG. 3 - FROM SHEET 5 OF 44. (STREET SHEET TOWER AND COUNTERWEIGHT)

LOAD TO LIST	
Runway Gearing	425,000*
Counterweight	135,000
Steel Rods	95,000
Carbon Steel 200' Clear	540,000
STEEL TOWER	2,070,000
Truss	20,000
Counterweights, Buffers and Runway Construction	80,000
	4,300,000*

RECOMMENDED

Waddell & Hardesty
 WADDELL & HARDESTY - CONSULTING ENGINEERS
William R. Latham
 WADDELL & HARDESTY - CONSULTING ENGINEERS

APPROVED

William R. Latham
 WILLIAM R. LATHAM - CIVIL ENGINEER AND GEN. MANAGER
Sally Taylor
 SALLY TAYLOR - SECRETARY
William R. Latham
 WILLIAM R. LATHAM - CIVIL ENGINEER

HARDESTY & HANOVER, LLP
 CELEBRATING EXCELLENCE AND INNOVATION

IN CHARGE OF
J. A. L. Waddell
 DRAFTSMAN
 TRACESET
 EXERCIST
 DATE: 03/06/2007

120

TH

ANNIVERSARY

1887-2007

YEARS OF SERVICE



J. A. L. Waddell.
Dr. J.A.L. Waddell
Founder

With our local presence—and global reach—we are providing our clients solutions to their most complex infrastructure needs. We invite you to see where we plan to go with our next 120 years, what we are doing today to get us there, and how our last 120 years has prepared us to best serve you... well into the future.

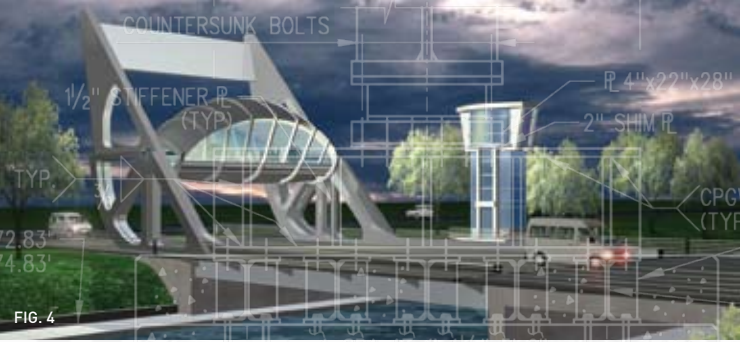
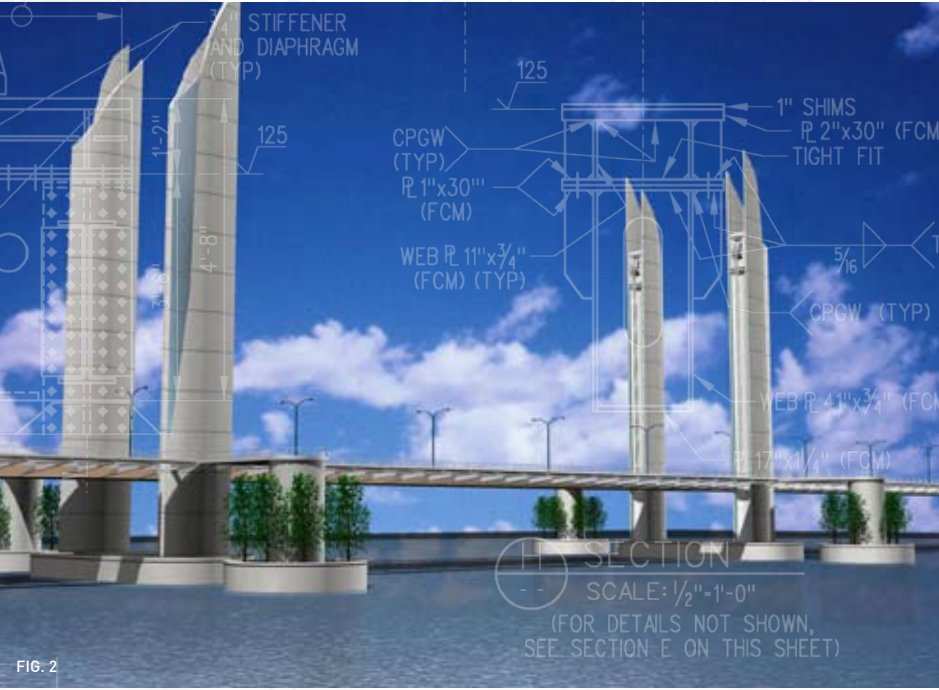
OUR FUTURE

We will in the future, as we have in the past, always seek to expand the services we provide to you, our clients. Having served the bulk of our present client base for well in excess of fifty years, we will look to continue anticipating their needs for the next fifty years. Your repeated trust, sincerely appreciated and doggedly earned, is our most prolific motivator.

Our future, like that of our clients requires innovating community specific solutions. We believe in partnership; our team is an extension of yours. The growth of our branch offices, eleven in counting, will fuel our ability to more deeply serve our clients. Concurrently, we will expand our global reach sharing our expertise across the country and around the globe—because we believe the best way to serve our clients is to sit next to them, understand their unique challenges and forge solutions together.

We celebrate the accomplishment of growing our mechanical and electrical disciplines to among the largest specialty practices in the world. We look forward to repeating that achievement with our highway, bridge inspection, stadia and power systems disciplines in the years and decades to come.

We also believe that people are the single most valuable asset to any organization. We will not stray from that which has shown us 120 years of success: to recruit and retain the best possible talent in the engineering community; to provide unmatched mentoring and training opportunities; and to grow each individual member of our outstanding team. Expanding on these values which have shown us tremendous success in the past will help us realize our clients' visions in the future.



The future of Hardesty & Hanover shines brightly. Leading the use of advanced technology, materials and construction methods, we strive endlessly to remain visionaries in the engineering community.

You, as a member of the engineering community, shape our future. Through advocacy, mentorship, and research, Hardesty & Hanover will act as steward to what we believe is the most rewarding vocation—the Engineering Profession.

HARDESTY & HANOVER, LLP

CELEBRATING EXCELLENCE AND INNOVATION

FIG. 1- New York, NY

FIG. 2- Bordeaux, France

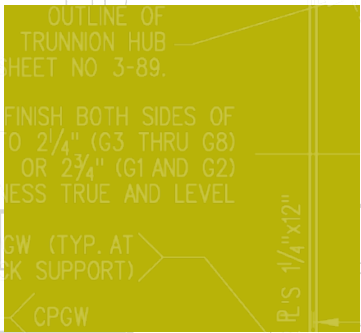
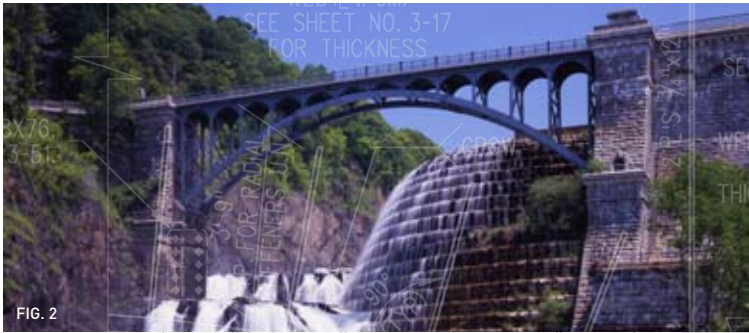
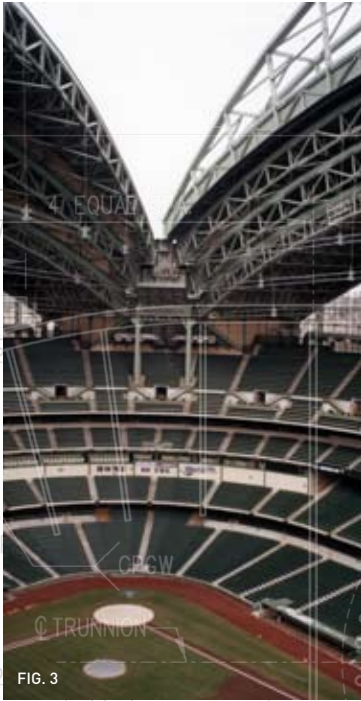
FIG. 3- South Adelaide, Australia

FIG. 4- Tianjin, PR China

FIG. 5- Lee County, FL

"Building upon the experience and success of those who came before us, we must continue to exceed our clients' expectations now and in the future. It is by leveraging the skills of our vastly talented, deeply committed staff that we will attain the best means to achieve such an important end."

Paul Skelton
Partner & Chief Development Officer



For centuries, engineering concepts have been refined and proven. Hardesty & Hanover prides itself on taking these tried and true concepts and using them in innovative ways.

From designing the heaviest movable bridge in the world to using the most modern materials, Hardesty and Hanover redefines the limits of engineering design.

HARDESTY & HANOVER, LLP

CELEBRATING EXCELLENCE AND INNOVATION

FIG. 1- New Haven, CT

FIG. 2- Westchester County, NY

FIG. 3- Milwaukee, WI

FIG. 4- New York, NY

FIG. 5- Washington, DC

"The cornerstone of any truly successful engagement is the attention paid to detail. By applying this compelling precept universally—not only to the services we directly provide our clients, but also to our internal operations—we can be assured of providing a complete and positive service experience. Our ultimate objective has always been, and remains today, total client satisfaction."

Charles J. Gozdziowski
Charles J. Gozdziowski
Partner & Chief Executive Officer



OUR PRESENT

Hardesty & Hanover has built on its legacy of providing first-rate consulting services to the largest, most distinguished public and private entities. World-renowned as the preeminent engineers of heavy movable structures, we are proud to see our realm expand to include the design and rehabilitation of complex fixed bridges, power systems and stadiums.

Drawing on our vast experience, we help our clients realize increased life of and productivity from their infrastructure assets. Leveraging innovation and time-tested fundamentals, we think creatively and act responsibly, combining the science of engineering with the art of design. Each aspect is aimed at a single goal: helping you to improve the lives of those you serve.



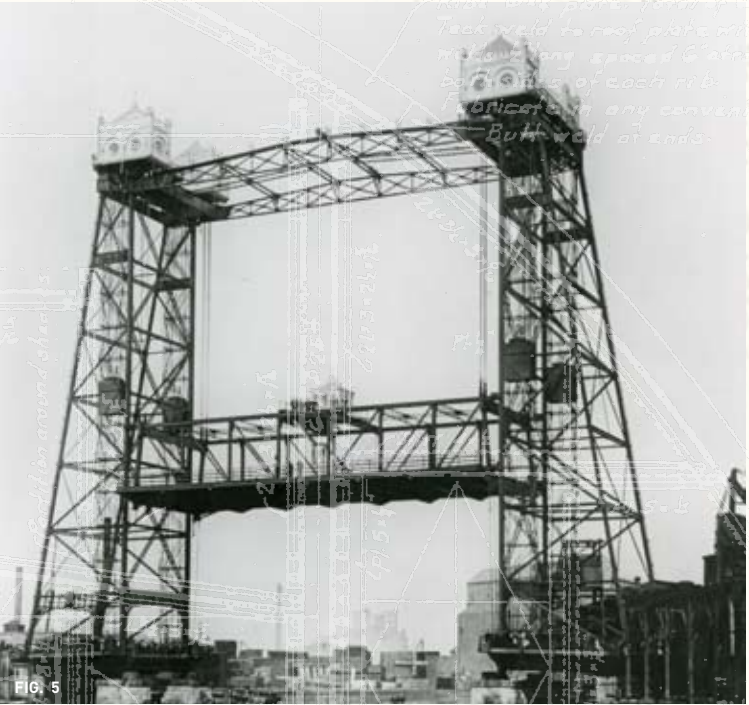
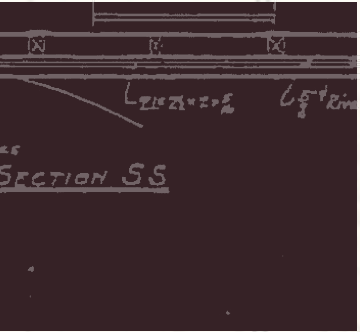
OUR PAST

Originally established in 1887 by Dr. J.A.L. Waddell, Hardesty & Hanover continues to be a firm owned and operated by professional engineers. As the patent holder of the first vertical lift bridge design, our founding father laid the groundwork for the firm to grow and mature into the distinguished international enterprise we are today.

On each new engagement we bring expertise amassed over twelve decades of service to our communities. From our first project completed in 1890 to our design of the 1938 and 1964 World's Fair monuments to our current projects spanning six continents, Hardesty & Hanover continues to build on the legacy established so long ago while contributing as the “noted voice” to what we view as the most satisfying profession of all.



Hardesty & Hanover has been a pioneer in engineering design for the last 120 years. Dr. J.A.L. Waddell's vertical-lift bridge design patent established a new category of transportation structures.



Additionally, Clinton D. Hanover, Jr. defined a new class of structure with the Hanover Skew Bascule. These and other ground-breaking ideas have enabled H&H to bring engineering to the level it is today.

HARDESTY & HANOVER, LLP

CELEBRATING EXCELLENCE AND INNOVATION

FIG. 1- Miami, FL

FIG. 2- Pasadena, CA

FIG. 3- Niagara Falls, NY

FIG. 4- New York, NY

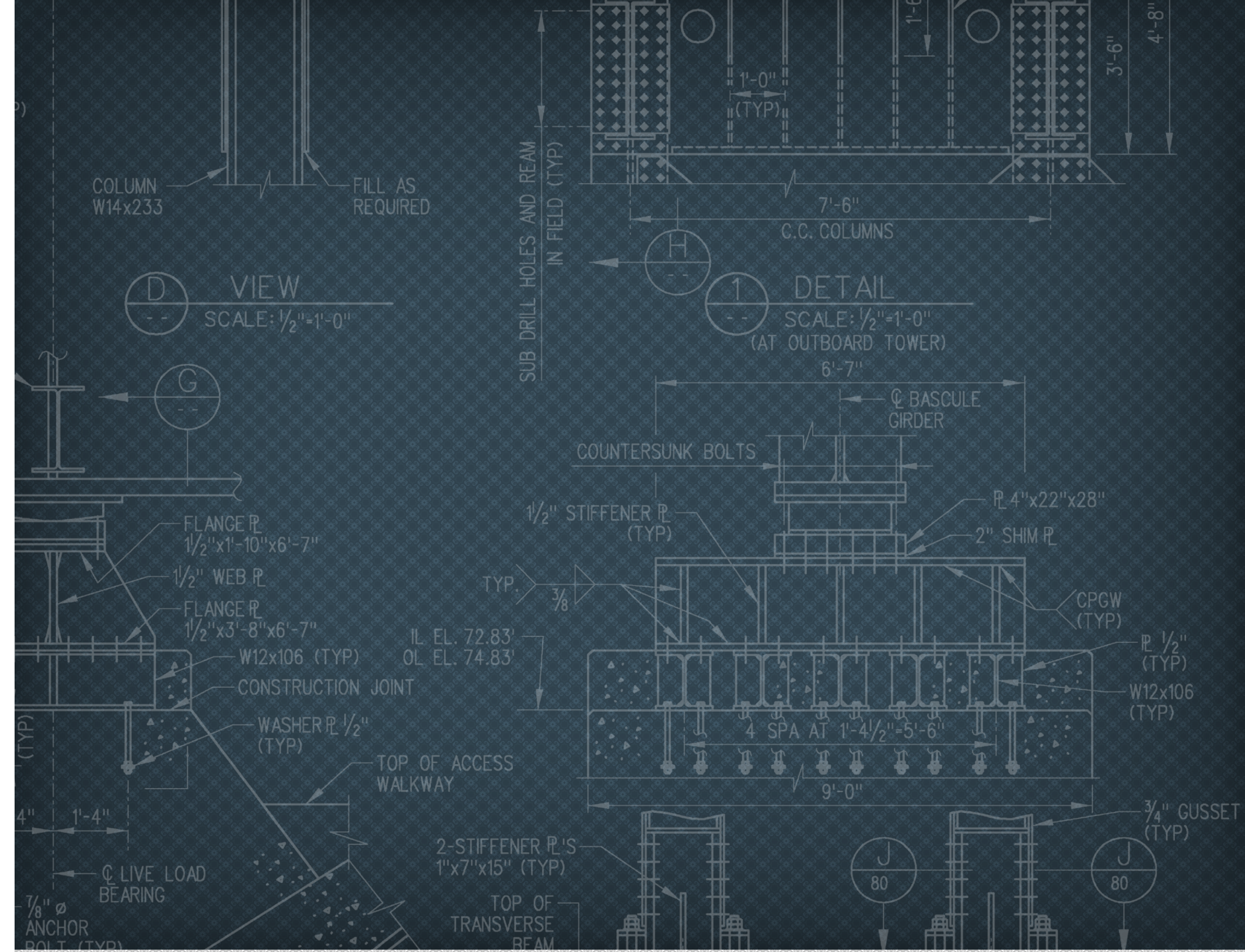
FIG. 5- Chicago, IL

"Experience is the foundation from which success can rise, and we have always measured success by the satisfaction of our clients. The stalwart underpinnings we enjoy today—earned over the last century—will benefit our clients in the next"

A.W. Herrmann
Andrew W. Herrmann
Managing Partner

J. A. L. Waddell.
Dr. J.A.L. Waddell
Founder

As we celebrate our 120th Anniversary, we continue to build on this legacy by focusing on the future—yours as well as ours.



NEW YORK OFFICE – HEADQUARTERS 1501 BROADWAY NEW YORK, NY 10036 T – 212.944.1150 F – 212.391.0297 ny@hardesty-hanover.com		LONG ISLAND OFFICE 135 PINELAWN ROAD, SUITE 204 NORTH MELVILLE, NY 11747 T – 631.293.2170 F – 631.293.2173 li@hardesty-hanover.com		WASHINGTON OFFICE 1235 FOURTH AVENUE EAST, SUITE 200, OFFICE #7 OLYMPIA, WA 98506 T – 360.943.4139 F – 360.943.4427 wa@hardesty-hanover.com
CONNECTICUT OFFICE 59 ELM STREET, SUITE 225 NEW HAVEN, CT 06510 T – 203.772.2857 F – 203.772.2897 ct@hardesty-hanover.com		MARYLAND OFFICE 180 ADMIRAL COCHRANE DRIVE, SUITE 555 ANNAPOLIS, MD 21401 T – 410.573.1999 F – 410.573.0650 md@hardesty-hanover.com		MASSACHUSETTS OFFICE 60 K STREET, 4TH FLOOR SO. BOSTON, MA 02127 T – 617.268.2017 F – 617.268.2678 ma@hardesty-hanover.com
FLORIDA OFFICE 1000 SAWGRASS CORPORATE PARKWAY, SUITE 544 SUNRISE, FL 33323 T – 954.835.9119 F – 954.835.9130 fl@hardesty-hanover.com		MICHIGAN OFFICE 2140 UNIVERSITY PARK DRIVE, SUITE 290 OKEMOS, MI 48864 T – 517.381.1772 F – 517.381.1775 mi@hardesty-hanover.com		
HOBOKEN OFFICE 84 WASHINGTON STREET HOBOKEN, NJ 07030 T – 201.656.8810 F – 201.656.9026 nj@hardesty-hanover.com		TRENTON OFFICE 850 BEAR TAVERN ROAD, SUITE 206 WEST TRENTON, NJ 08628 T – 212.944.1150 F – 212.391.0297 cnj@hardesty-hanover.com		BEIJING OFFICE NO. 33 SUZHOU STREET, SUITE 809 HAIDIAN DISTRICT, BEIJING, CHINA 100080 T – 011.86.10.6255.0019 F – 011.86.10.6255.0039 china@hardesty-hanover.com
HARDESTY & HANOVER, LLP		<ul style="list-style-type: none">• STRUCTURAL• MECHANICAL• ELECTRICAL• HIGHWAY		<ul style="list-style-type: none">• GEOTECHNICAL• HYDRAULIC• SEISMIC
CELEBRATING EXCELLENCE AND INNOVATION		120		<div>www.hardesty-hanover.com</div> <div>1887-2007120TH ANNIVERSARY</div> <div></div>